



maestro 100

Lite Ext

Windows 98 GPRS Connection Setup Guide

Rev. 00

Revision history

Rev.	Date	Details	Originated by
00	22 Feb 2007	First release	Wallace Lee

Maestro 100 is a registered trademark of **Maestro Wireless Solution Ltd.**

This manual is written without any warranty. **Maestro Wireless Solution Ltd.** reserves the right to modify or improve the product and its accessories which can also be withdrawn without prior notice.

Besides, our company stresses the fact that the performance of the product as well as accessories depends not only on the proper conditions of use, but also on the environment around the places of use.

Maestro Wireless Solution Ltd. assumes no liability for damage incurred directly or indirectly from errors, omissions or discrepancies between the modem and the manual.

CONTENTS

1. INTRODUCTION	2
2. CONFIGURATING Maestro 100	2
3. ADDING A MODEM TO WINDOWS 98	2
4. MAKING A DIAL-UP NETOWRKING	4
5. TROUBLE SHOOTING	9

1. INTRODUCTION

This document describes how to use Maestro 100 and a PC with Windows 98 to make a GPRS Internet Dial-up.

1.1 Setup requirement

The following items are necessary for the setup:

- Maestro 100 / Ext /Lite with PC cable and power supply (Maestro 100 ECO not supported)
- PC with Windows 98 installed, and a free RS-232 port
- A SIM card with GPRS service subscribed

2. CONFIGURATING Maestro 100

2.1 Setting up HyperTerminal

Refer to Chapter 2 and 3 of Maestro 100 USER GUIDE, set up Maestro 100 and Windows98 HyperTerminal. Make sure the modem is ready to receive commands.

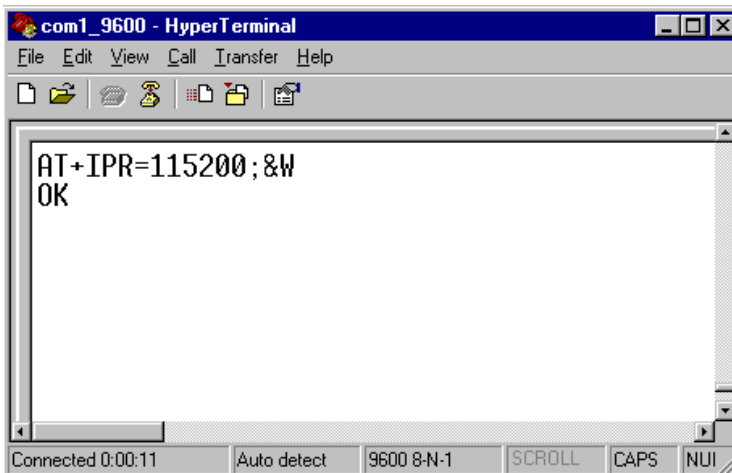
2.2 Setting serial port speed

On the HyperTerminal, enter command : **AT+IPR=115200; &W<ENTER>**

Note: after entering this command the modem serial port speed will be permanently set at 115200bps.

Now you can close the HyperTerminal

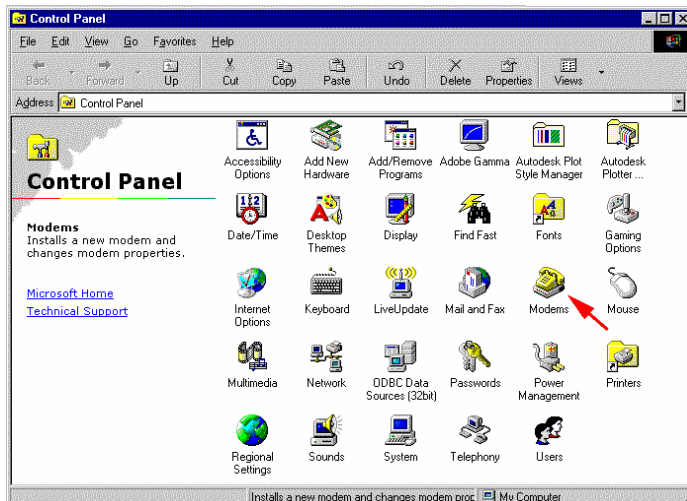
* If your modem has been configured to 115200bps already before, skip this step.



3. ADDING A MODEM TO WINDOWS 98

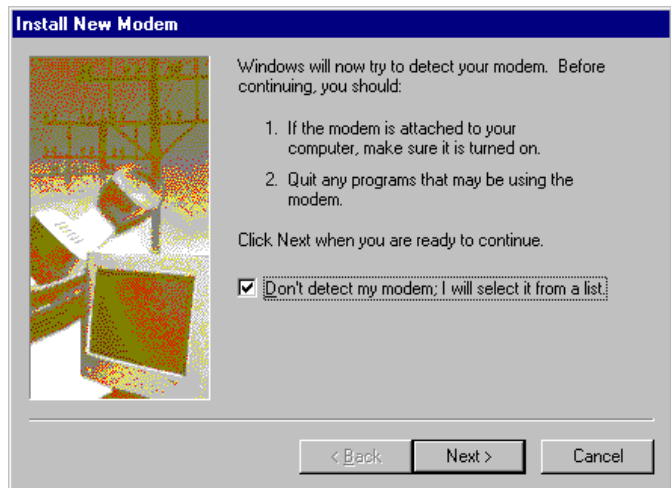
3.1 On Windows 98, Choose "Start", then choose "Control Panel folder

3.2 Double click the 'Modem' icon

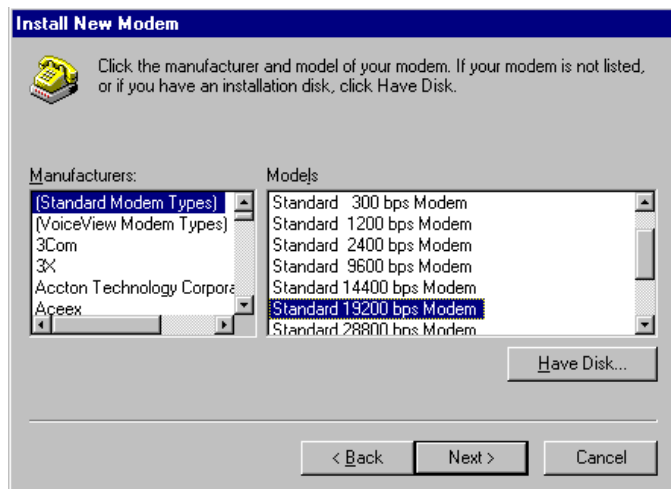


3.3 If your system have no modem installed it will show the **'Install New Modem'** dialogue box, otherwise it will show **'Modem Properties'** (see) You can then press **'Add'** button

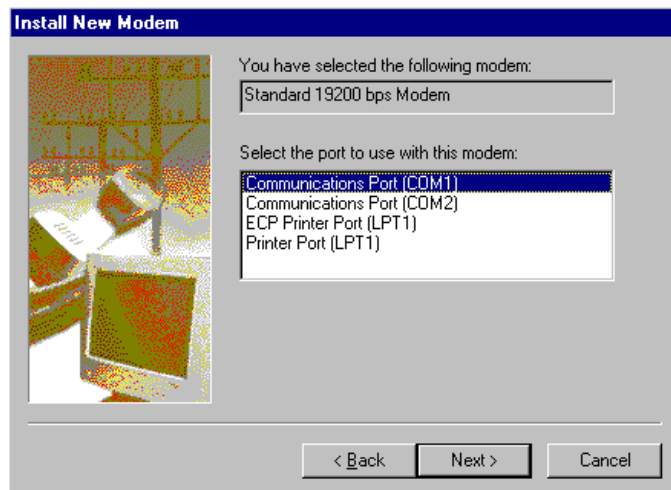
3.4 On **'Install New Modem'** dialogue box, click **'Don't detect my modem'**. Then press **'Next'**



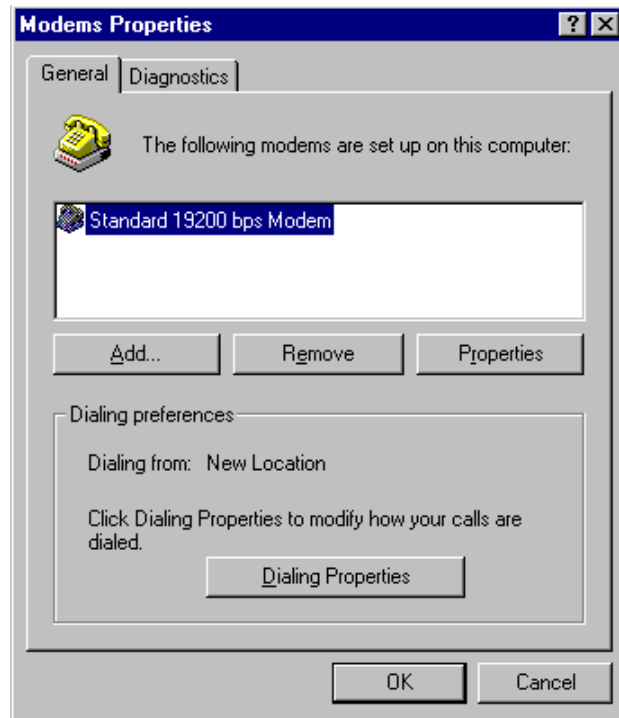
3.5 Choose **'Standard 19200bps Modem'**, then press **'Next'**



3.6 Choose the COM port where the Maestro 20 / Maestro 100 connected, then press **'Next'**

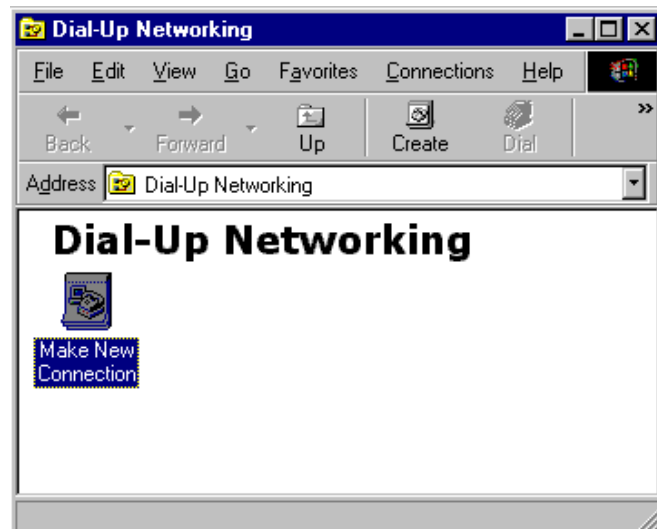


3.5 Now the modem has been installed. You can press 'OK'



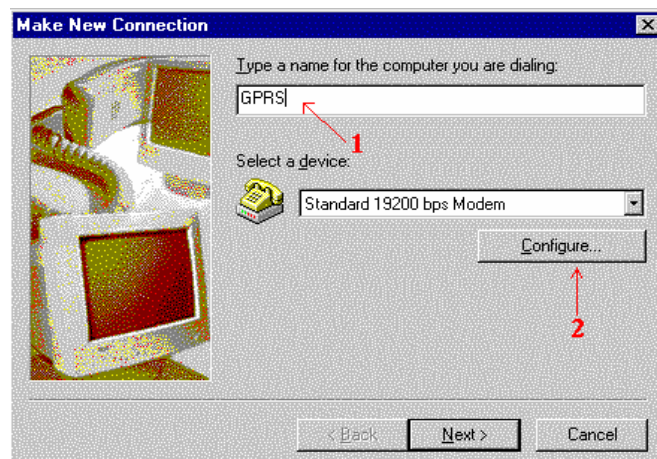
4. MAKING A DIAL-UP NETWORKING

4.1 On Windows 98, go to 'Accessories' → 'Communication' → 'Dial-up Networking'



4.2 Double click 'Make a New Connection'

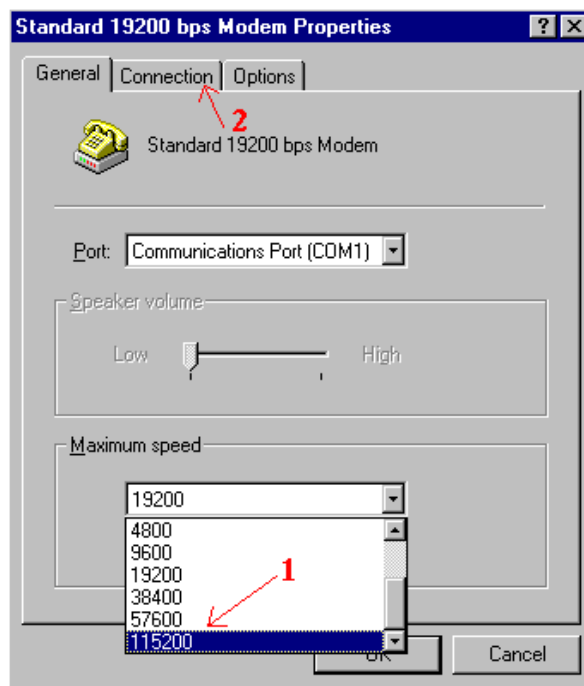
4.3 Type the name of the dial-up profile as you want



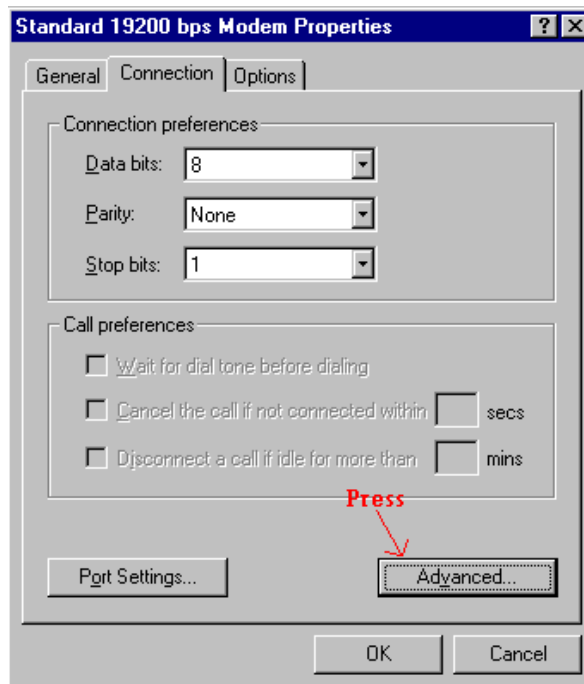
4.4 Choose the '19200 bps modem' and press 'Configure'

4.5 Choose the 'Maximum speed' to '115200'

4.6 Click 'Connection' tab



4.7 Press 'Advanced' button

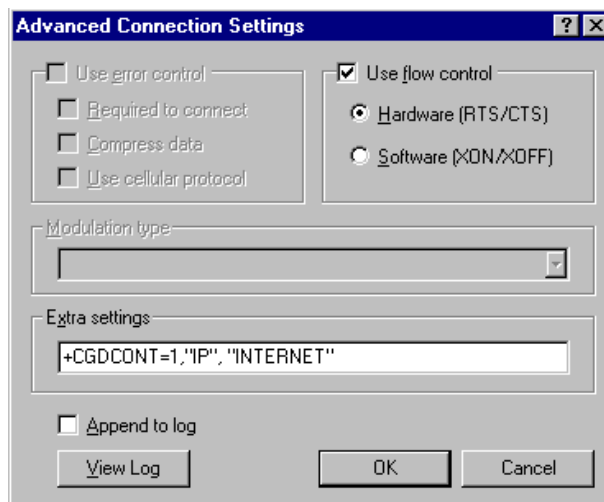


4.8 On 'Extra settings', type the APN information here. (Consult your Network Operator for the correct APN settings)

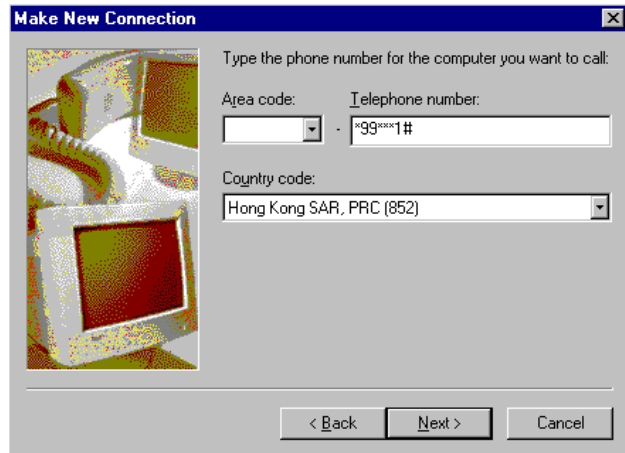
Common setting is :
+CGDCONT=1,"IP","INTERNET"

4.9 Use Hardware flow control, then press 'OK'

4.10 Close all modem properties dialog box by pressing 'OK's and go back to the 'Make new connection' (sec. 4.3). Then press 'Next'

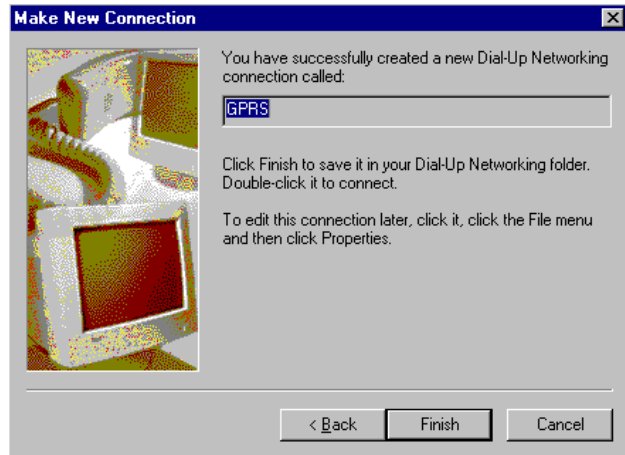


4.10 On the 'Telephone number' type '*99**1#'. Then press 'Next'

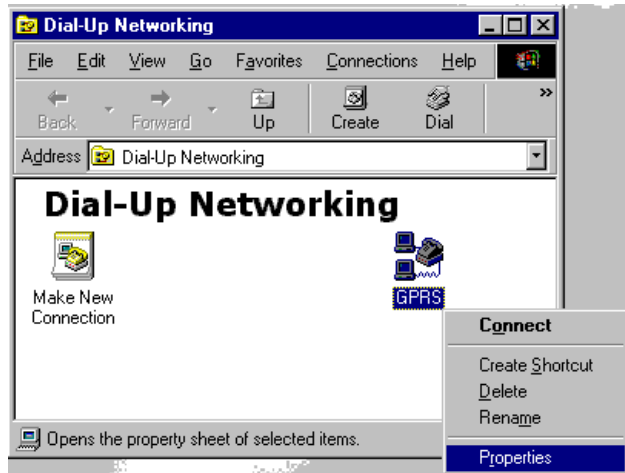


4.11 Press 'Finish' and you have made a GPRS dial-up profile.

However you need to edit some more settings.

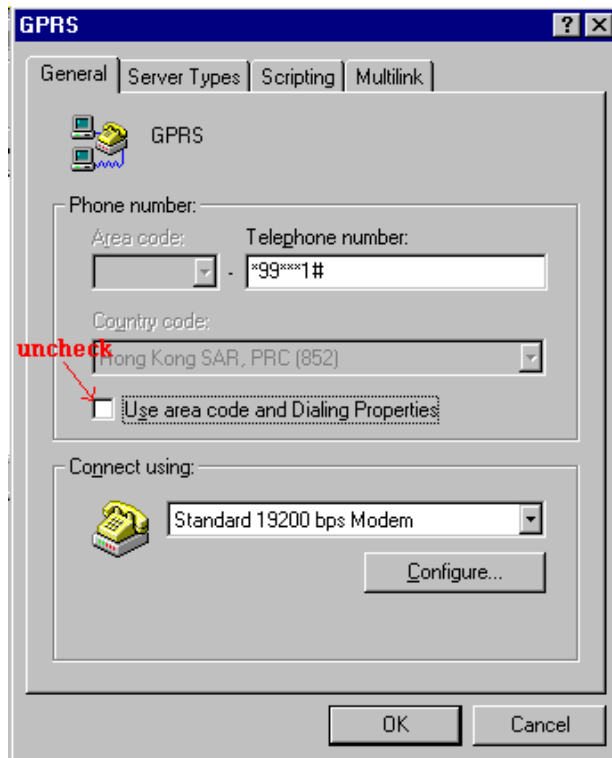


4.12 Right-click the just-made GPRS dial-up icon. Then choose 'Properties'



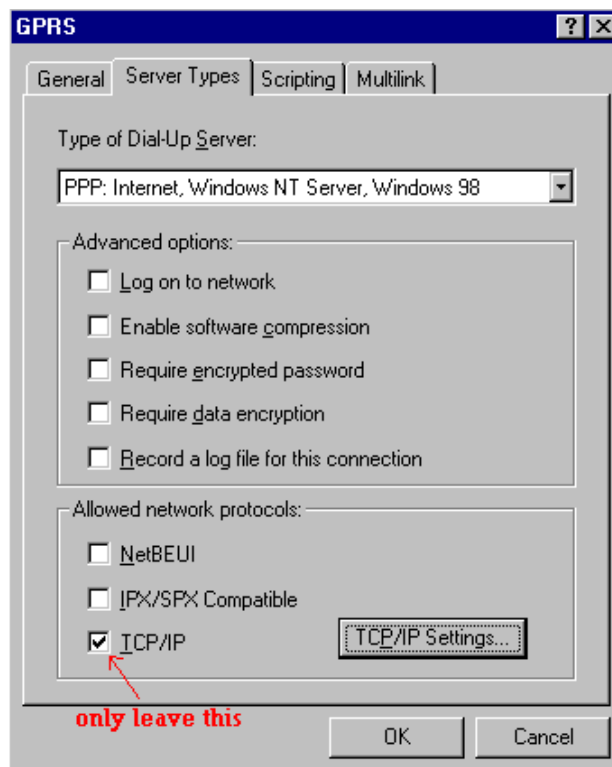
4.13 Uncheck the 'Use area code' option

4.14 Press 'Server Types' tab



4.15 Uncheck ALL options EXCEPT 'TCP/IP' option

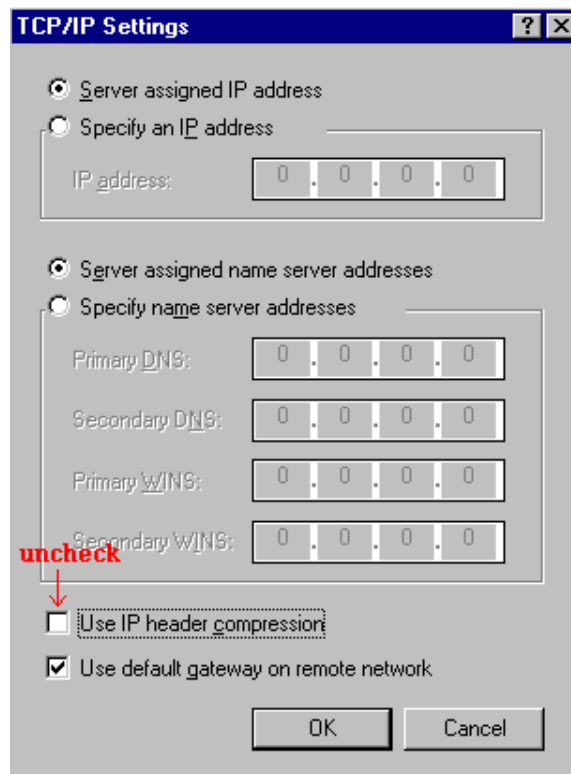
4.16 Press the 'TCP/IP Settings' button



4.17 Uncheck the 'Use IP header compression' option

4.18 Then close all dialog boxes by pressing 'OK's.

Now you have finished the setup of GPRS DUN.



4.19 Now you can make a GPRS dial-up by double-click the GPRS icon.

Remember to leave User name and password blank on connection (or refer to your network operator's instruction)



5. Trouble shooting

Problem	Action
Dial-up Networking reports modem is not responding	<p>Check if the modem is ready, LED is flashing slowly</p> <p>Check the serial port setting of Maestro and Windows modem device</p> <p>Check connection cable</p> <p>Check if the modem is used by another program</p>
Dial-up not successful	<p>Check if GPRS service ready from the network</p> <p>Try entering command: <code>AT+CGQREQ=1,0,0,3,0,0</code> by using HyperTerminal</p>
Dial-up successful, but disconnect immediately	<p>Check APN setting, consult your network operator</p>
Dial-up successful, but cannot access the Internet	<p>Check your Windows' Internet settings</p> <p>Check signal strength</p> <p>Note : Dial-up Networking will NOT drop even signal is lost; it will try to recover soon</p>