



Application Note: R-UIM Security Implementation for Wismo Q2338

Document Information

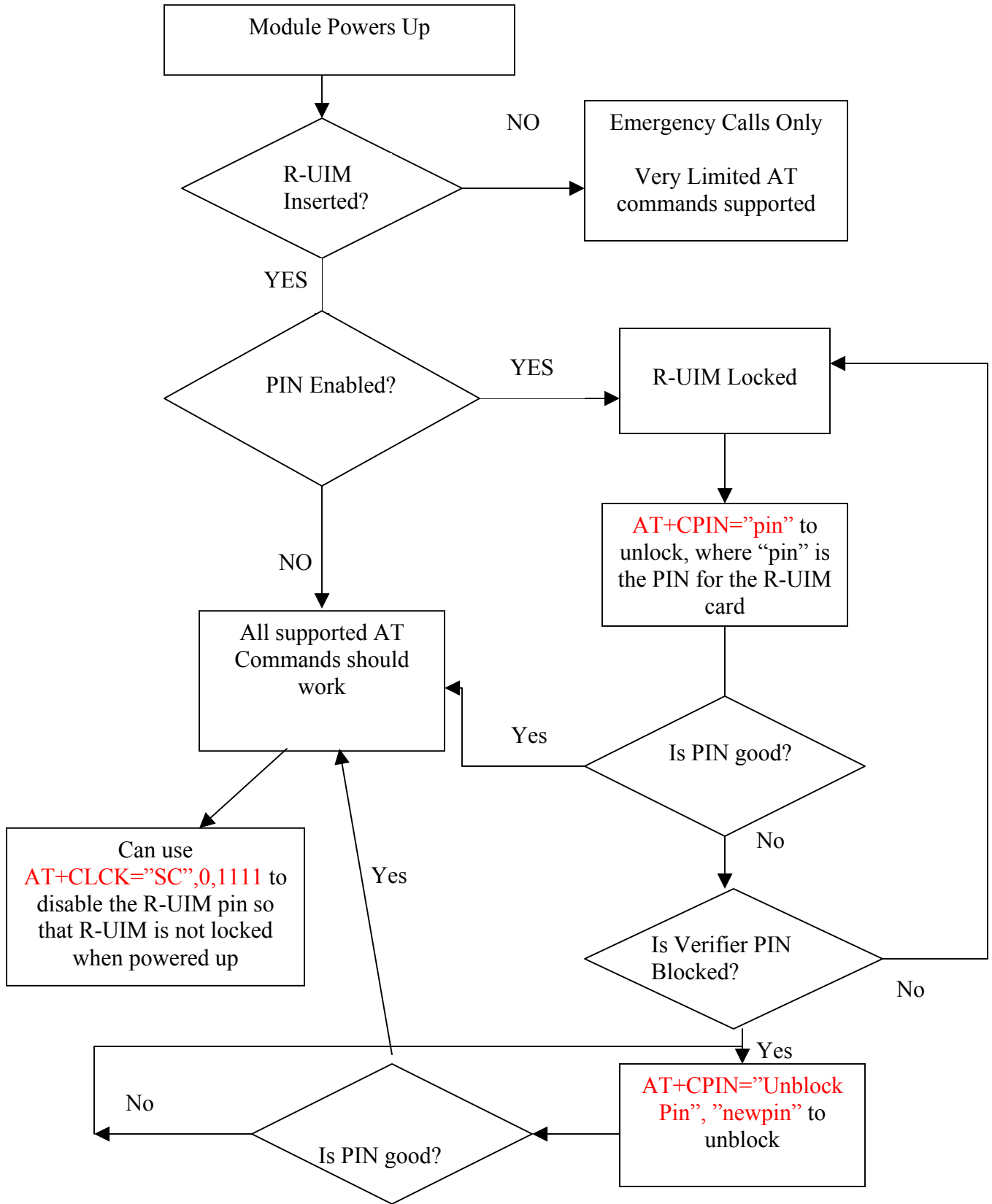
	Name	Date	Revision
Written by	James Fang Xiaoming Tang Steven Shen	20-Sep-02	0.1



Current R-UIM cards may or may not have security PIN enabled. For Wismo Q2338 modules with R-UIM software option, users are likely to encounter problems sending AT commands to the module if the R-UIM card has the security PIN enabled. This document aims to explain the implementation of R-UIM security requirements and provide resolutions on how to get by security related module “blockage”.

A flow chart is created to describe the power-up sequence of the module, with or without R-UIM card inserted. Note that the simplest way for a module with R-UIM software option to work is to have a PIN disabled R-UIM card inserted.

Please refer to AT Command Specification section 6 “Security Commands” for details on AT Commands used in this document.





** You have a total of 3 tries to verify PIN. After 3 tries and no correct PIN was entered, the card is blocked.

*** You have a total of 10 tries to unblock card. If they were all wrong, the card is dead. Ask service provider.