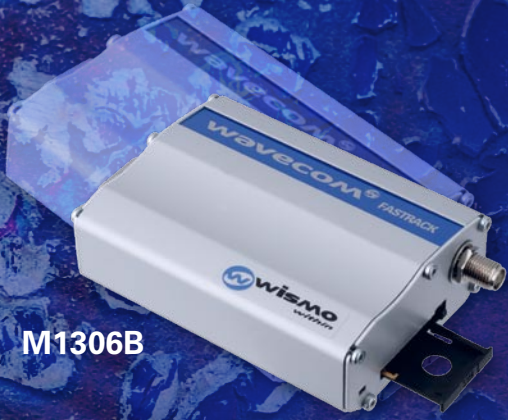


wavecom 

M1306B



Q2686H



Q2687H



Q24 Series



M2106B



GS64



GR64



Q2501B



wavecom 

Make it wireless

Wireless Solution for Everyone

GLYN
High-Tech Distribution

FASTRACK "Plug & Play" Modem M1306B

THE M2M MODEM FOR WIRELESS CONNECTIVITY

WAVECOM's rugged, discrete Fastrack GSM/GPRS Modem has proven itself for stable, reliable performance on wireless networks worldwide for many years and continues to deliver rapid time to market and painless integration for M2M (Machine-to-Machine) applications.

Fully certified, the dualband 900/1800 MHz Fastrack M1306B offers GPRS Class10 capability and Open AT® Plug-Ins as TCP/IP and Internet. The TCP/IP Plug-In includes the basic internet protocols (TCP/IP/UDP/DNS) and the Internet Plug-In adds the E-mail and FileTransfer capability.

With a broad range of input voltage from 5.5V to 32V and easy connection via standard RS-232 serial link, the Fastrack is a real Plug-and-Play-Solution for wireless communication. Together with the Open AT® Software Suite and the two General Purpose input/output pins, this modem can easily be used for alarm, telemetry and any other application.

For easy start up, GLYN offers a Starter-Kit for the Fastrack Modem, which includes all necessary accessories and the Open AT® Software Suite.



PRODUCT FEATURES:

Wireless Processing Power:

- ARM 7, 32-Bit, 52MHz max.
- Program Flash: up to 1.5 MByte
- Up to 13MIPS

Operating-System Open AT® OS 6.57 with:

- VariPower (programmable Power Saving Modes)
- RTC with Calendar
- More than 350 AT Commands and APIs
- Investment Protection with:
 - DOTA Type 1 (Open AT® Application)
 - DOTA Type 2 (WAVECOM OS)

Open AT® Plug-Ins:

- TCP/IP Plug-In: TCP/IP/UDP/DNS/PING
- Internet Plug-In: adds Email (POP3/SMTP)&FTP
- Security Plug-In (available 2007)
- Easy Data Logging /Report Creation and Transfer

Physical:

- Overall Dimensions: 73 x 54 x 25 mm
- Weight: 82 g
- Temperature Range:
 - Operating Class A -20°C - +55°C

GSM Features:

- Dual-Band (900/1800 MHz)
- Audio Codec (FR/HR/EFR)
- GSM CSD 14.4 Kbps
- GPRS Multislot Class 10, Class B
- Enhanced AEC & Noise Reduction

Interfaces

- SMA Antenna Connector
- Internal 3V SIM-Card Reader
- 15 Pin high-density SUB-D Connector:
 - Audio: Microphone and Speaker
 - RS-232 serial Link Supporting:
 - Remote Control by AT Commands
 - Serial Baud Rate up to 115.2 Kbps
- 2 x GPIOs/I²C (multiplexed)
- Power Supply
- Input Voltage : 5.5V – 32V
- Peak 1.7A @ 5.5V

Approval & Quality:

- R&TTE Directive, GCF-CC, CE Marking
- Manufacturing: ISOTS 16949
- Quality: ISO 9001
- RoHS compliant according Directive 2002/95/EC

Ordering Information:

Manufacturer	Product Name	Product Description
WAVECOM	M1306B V6.57	Fastrack Modem, GSM 900/1800, GPRS Cl.10 and TCP Plug-In
WAVECOM	M1306B V6.57 IP	Fastrack Modem, GSM 900/1800, GPRS Cl.10 and Internet Plug-In
WAVECOM	M1306B SK	Fastrack Starter Kit including all necessary Accessories
Ansmann	M1306B POWER SUPPLY	Power Supply 12V/1.25A regulated with Molex Connector
YAMAICHI	M1203A RS232-CABLE	RS-232 serial Data Cable for Fastrack Modem, Length 2 m
EAD	DUALBAND SMA-MALE	Triband GSM 900/1800/1900 MHz Antenna with SMA-Connector
EAD	EADTARGAN SMA-RIGHT	90° -Triband GSM 900/1800/1900 MHz Antenne with SMA-Connector

V6.57 refer to the current software version at the time of printing. Product name will change accordingly when new software versions are released. Software updates are available free of charge within the same main version.

INTEGRA "Plug & Play" Modem M2106B

MAKE YOUR MACHINES WIRELESS

Build around WAVECOM's field-proven technology and small enough to fit into the tightest spaces, the Integra M2106B offers a rapid, handy path to adding wireless capability to any system.

"WISMO Within" technology ensures stable, reliable performance on GSM/GPRS networks for the life of your application.

Design innovative applications by taking advantage of the Open AT® Software Suite to directly manage external peripheral through UART's, programmable GPIOs and buses.

The Integra has been optimized for wireless Machine-to-Machine applications and is easy to integrate due to standard connectors and the embedded SIM holder. Together with the Open AT® Plug-Ins such as TCP/IP and Internet, the Integra can easily be used for alarm, telemetry and any other application.



PRODUCT FEATURES:

Wireless Processing Power:

- ARM 7, 32-Bit, 52MHz max.
- Program Flash: Up to 1.5 MByte
- Up to 13MIPS

Operating-System Open AT® OS 6.57 with:

- VariPower (programmable Power Saving Modes)
- RTC with Calendar
- More than 350 AT Commands and APIs
- Investment Protection with:
 - DOTA Type 1 (Open AT® Application)
 - DOTA Type 2 (WAVECOM OS)

Open AT® Plug-Ins

- TCP/IP Plug-In: TCP/IP/UDP/DNS/PING
- Internet Plug-In: adds Email (POP3/SMTP) & FTP
- Security Plug-In (available 2007)
- Easy Data Logging / Report Creation and Transfer

Physical

- Overall Dimensions: 64 x 46 x 12 mm
- Weight: 71 g
- Temperature Range:
 - Operating Class A -20°C - +55°C
 - Storage -40°C - +85°C

GSM Features:

- Dual-Band (900/1800 MHz)
- Audio Codec (FR/HR/EFR)
- GSM CSD 14.4 Kbps
- GPRS Multislot Class 10, Class B
- Enhanced AEC & Noise Reduction

Interfaces

- MMCX Antenna Connector
- Internal 3V SIM-Card Reader
- 50 Pin Board to Board Connector:
 - 3V SIM (5V SIM with external Level Shifter)
 - Audio: 2x Microphone and 2x Speaker
 - RS-232 serial Link Interface
 - Keypad, up to 5x5 Matrix
 - General purpose I/O: 3 Pins
 - Software I²C Bus
 - Analog to digital Converter
 - Power Supply
 - Input Voltage : 5V DC ± 5% / 1 A
 - Peak 1.32A @ 5V

Approval & Quality:

- R&TTE Directive, GCF-CC, CE Marking
- Manufacturing: ISOTS 16949
- Quality: ISO 9001
- RoHS compliant according Directive 2002/95/EC

Ordering Information:

Manufacturer	Product Name	Product Description
WAVECOM	M2106B V6.57	Integra Modem, GSM 900/1800, GPRS Cl.10 and TCP Plug-In
WAVECOM	M2106B V6.57 IP	Integra Modem, GSM 900/1800, GPRS Cl.10 and Internet Plug-In
WAVECOM	M2106B SK	Integra Starter Kit
Diverse	6062-050-00-00-ST	50 Pin Board-to-Board Connector for Integra Modem
TPS	ADAPTER MMCX/FME 20	Adapter cable MMCX-Male right Angel / FME-Male, Length = 200mm
TPS	ADAPTER MMCX/SMA	Adapter cable MMCX-Male right Angel / SMA-Female, Length = 127mm

V6.57 refer to the current software version at the time of printing. Product name will change accordingly when new software versions are released. Software updates are available free of charge within the same main version.

Wireless CPU QUIK Q24 Series SECURING THE FUTURE

Extention of the most popular Family of Wireless CPUs

The popular Quik Series was first launched in 1997 and is especially designed for embedded industrial Machine-to-Machine devices. This new extension includes four versions: Q24 Classic, Q24 Plus, Q24 Extended and Q24 Auto; in order to address a variety of wireless devices. The new Q24 Family offers ultimate design flexibility with a choice of five different radio connectors and built-in SIM holder option. By being hardware and software compatible with the existing Q24 Family, this new series allows seamless upgrade of customer products and devices, thus saving on new design or re-design costs. The new WAVECOM operating system Open AT® offers extended features and functionality including: Enhanced echo cancellation, rapid battery charger, TCP/IP Plug-In with basic internet protocols as well as an Internet Plug-In with E-mail and File Transfer capabilities.

Q24 Classic:

The Q24 Classic, is the perfect solution for all Machine-to-Machine applications that require basic voice, SMS or circuit switched data wireless connectivity.

Q24 Plus:

Loaded with complete 2.5G GSM/GPRS voice and data capacity, this super-thin series is designed to fit into any application.

Q24 Extended:

Beside the complete 2.5G GSM/GPRS voice and data capacity, the Q24 Extended also offers an extended temperature range.

Q24 Auto:

In addition to the GSM/GPRS voice and data capacity, the Q24 Auto also offers an Automotive environmental qualification (temperature / humidity /vibration /...).

Each member of the new Q24 Series Family will offer greater DOTA (Download Over-The-Air) capacity making remote e-maintenance and new feature enhancements possible for both the operating system and the application protocols. As with all new WAVECOM solutions, software upgrades to any remote device can be done while the equipment is in the field, without ever having to return it to a service center, thereby increasing the device life span and reducing the total cost of ownership.

This new family of solutions is interchangeable with the new RoHS compliant CDMA Q2438 Wireless CPU and can operate worldwide thanks to its quadband GSM and Codec capability. In addition, the new Q24 Family is fully "lead-free" compliant according to RoHS (Restriction of Hazardous Substances) and meets worldwide guidelines of low lead content.



PRODUCT FEATURES:

Wireless Processing Power:

- ARM 7, 32-Bit, 52MHz max.
- Program Flash: Up to 1.5 MByte
- Up to 13MIPS

Operating-System Open AT® OS 6.57 with:

- VariPower (programmable Power Saving Modes)
- RTC with Calendar
- Lilon Battery Charger
- More than 350 AT Commands and APIs
- Investment Protection with:
 - DOTA Type 1 (Open AT® Application)
 - DOTA Type 2 (WAVECOM OS)

Open AT® Plug-Ins:

- TCP/IP Plug-In: TCP/IP/UDP/DNS/PING
- Internet Plug-In: adds Email (POP3/SMTP) & FTP
- Security Plug-In (available 2007)
- Easy Data Logging / Report Creation and Transfer

Physical:

- Overall Dimensions: 58 x 32 x 3.9 mm
- Weight: < 12 g
- Temperature Range:
 - Operating Class A -20°C - +55°C
 - Operating Class B -30°C - +75°C (Only Q24 Extended and Auto)
 - Storage -40°C - +85°C

GSM Features:

- Quad-Band (850/900/1800/1900 MHz)
- Quad Audio Codec (FR/HR/EFR/AMR)
- GSM CSD 14.4 Kbps
- GPRS Multislot Class 10, Class B
- Enhanced AEC & Noise Reduction

Interfaces:

- Antenna Connection:
 - U.FL Connector on Bottom Side
 - RF Pads supporting soldered coaxial Cable
 - IMP Connector
 - MMS Connector (optional for Q24 Auto)
 - U.FL Connector on top (optional for Q24 Auto)
 - SIM Holder on top (optional on Q24 Classic and Plus)
- 60 Pin Board to Board Connector:
 - 1.8V/3V SIM (5V SIM with external Level Shifter)
 - Audio: 2x Microphone, 2x Speaker
 - 2 x RS-232 serial Link up to 115.2 Kbps
 - Keypad, up to 5x5 Matrix
 - General purpose I/O: 1 Input, 3 Output, 6 I/O
 - Software I²C Bus
 - General purpose serial Interface
 - Analog to digital Converter
 - Power Supply: 3.6VDC nominal - 1.8A Peak

Approval & Quality:

- R&TTE Directive, GCF-CC, CE Marking, FCC, PTCRB, China RTE
- Manufacturing: ISOTS 16949
- Quality: ISO 9001
- RoHS Compliant according Directive 2002/95/EC

Ordering Information:

Manufacturer	Product Name	Product Description
WAVECOM	Q24 Classic V6.57	Wireless CPU, GSM 850/900/1800/1900
WAVECOM	Q24 Plus V6.57	Wireless CPU, GSM 850/900/1800/1900, GPRS Cl. 10 and TCP/IP Plug-In
WAVECOM	Q24 Plus V6.57 IP	Wireless CPU, GSM 850/900/1800/1900, GPRS Cl. 10 and Internet Plug-In
WAVECOM	Q24 Ext V6.57	Wireless CPU, GSM 850/900/1800/1900, GPRS Cl. 10, TCP/IP Plug-In and extended Temperature Range
WAVECOM	Q24 Ext V6.57 IP	Wireless CPU, GSM 850/900/1800/1900, GPRS Cl. 10, Internet Plug-In and extended Temperature Range
WAVECOM	Q24 Auto V6.57	Wireless CPU, GSM 850/900/1800/1900, GPRS Cl. 10, TCP/IP Plug-In and automotive Qualification
WAVECOM	Q24 Auto V6.57 IP	Wireless CPU, GSM 850/900/1800/1900, GPRS Cl. 10, Internet Plug-In and automotive Qualification
WAVECOM	Q24 Plus STK	WAVECOM Quik Starter Kit
GLYN	EVBO24PLUS	GLYN Quik Evaluationboard
YAMAICHI	FMS006Z-0000-BF	SIM Card Reader; cover Type, w/o Switch
YAMAICHI	FMS006Z-2001-1	SIM-Card Reader; push-push; with Switch
YAMAICHI	FMS006-2310-0	SIM-Card Reader; push-lock; w/o Switch
YAMAICHI	FMS006-3000-1	SIM-Card Reader; with Tray, w/o Switch
AVX	24-5087-060-900-861	60 Pin Board-to-Board Connector for Quik Q24 Series
TPS	ADAPTER CABLE FME 20	Adapter Cable with FME-Male Connector, Length = 200mm
TPS	ADAPTER CABLE SMA	Adapter Cable with SMA Female Connector, Length = 127mm
VIMCOM	ADAPTER UFL/FME	Adapter Cable Hirose U.FL Male right to FME-Male, Length = 100mm

V6.57 refer to the current software version at the time of printing. Product name will change accordingly when new software versions are released. Software updates are available free of charge within the same main version.

Wireless Solutions for Everyone

Wireless CPU Q2686 MORE POWER, LESS SPACE

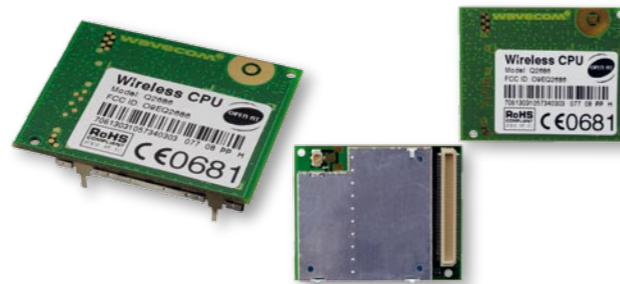
The quadband wireless CPU Q2686 has it all: Huge processing power, Open AT®, the world's most powerful cellular embedded application environment and the Operating System 6.61 supporting Internet connections. The first in a bold new family of solutions from WAVECOM, the Q2686 is the most compact customizable quadband GSM/GPRS package available. The quadband functionality (GSM 850/900/1800/1900 MHz) allows to use your application in all GSM networks of the world without having different GSM modules. Powered by a new ARM9 processor, which provides up to 87 MIPS (using Vari Speed) along with digital audio capability and extended connectivity features.

With low power consumption, the Q2686 wireless CPU has the performance, flexibility and adaptability you need for your next wireless application. One-third smaller than the previous generation, equipped with up to 44 GPIOs and the largest range of peripheral interfaces, including companion Bluetooth and GPS, the wireless CPU Q2686 is especially suited to telemetry and metering applications.

Embed your application

Get the power you need with the new 32-Bit, 104MHz ARM9 processor. Save time and space by using fourth generation Open AT® tools to speed up development.

Use the new Download-Over-the-Air capability for both, the Open AT® operating system and the Open AT® application for upgrades & enhancements. With this WAVECOM solution, has to be returned from the field to a service center. The device life span will be increases and the total cost of ownerships reduced.



PRODUCT FEATURES:

Wireless Processing Power:

- ARM 946E-S, 33-Bit, 104MHz
- Program Flash: Up to 1.5 MByte
- Up to 87MIPS

Operating-System Open AT® OS 6.61 with:

- RealTime OS (1ms Interrupt Latency)
- VariSpeed (Control of Clock Frequency)
- VariPower (programmable Power Saving Modes)
- RTC with Calendar
- Lilon Battery Charger
- More than 350 AT Commands and 440 APIs
- Investment Protection with:
 - DOTA Type 1 (Open AT® Application)
 - DOTA Type 2 (Wavecom OS)

Open AT® Plug-Ins:

- Internet Plug-In: TCP/IP/UDP/DNS/PING and Email (POP3/SMTP) & FTP
- Security Plug-In (available 2007)
- C-GPS
- Bluetooth

Physical:

- Overall Dimensions: 40 x 32.2 x 4 mm
- Weight: 9 g
- Temperature Range:
 - Operating Class A -20°C - +55°C
 - Operating Class B -40°C - +85°C
 - Storage -40°C - +85°C

GSM Features:

- Quad-Band (850/900/1800/1900 MHz)
- Quad Audio Codec (FR/HR/EFR/AMR)
- GSM CSD 14.4 Kbps
- GPRS Multislot Class 10, Class B
- Enhanced AEC & Noise Reduction

Interfaces:

- Antenna Connection:
 - U.FL Connector
 - RF Pads supporting soldered Coaxial Cable
- 100 Pin Board to Board Connector:
 - 1.8V/3V SIM (5V SIM with external Level Shifter)
 - Analog Audio: (2x Microphone, 2x Speaker)
 - Digital Audio (PCM)
 - USB 2.0 Slave
 - 2 x RS-232 serial Link up to 115.2 Kbps
 - Keypad, up to 5x5 Matrix
 - Up to 44 GPIOs
 - SPI and I²C-Bus
 - 2 x ADC (10-Bit, 0-2V)
 - Power Supply: 3.6VDC nominal - 1.7A Peak

Approval & Quality:

- R&TTE Directive, GCF-CC, CE Marking, FCC, PTCRB, China RTE
- Manufacturing: ISOTS 16949
- Quality: ISO 9001
- RoHS compliant according Directive 2002/95/EC

Ordering Information:

Manufacturer	Product Name	Product Description
WAVECOM	Q2686H V6.61	Wireless CPU, GSM 850/900/1800/1900, GPRS Cl. 10 and Internet Plug-In
GLYN	EVBO2686	GLYN Quik Evaluationboard for Q2686
WAVECOM	Q2686F STK	WAVECOM Quik Q2686 Starter Kit
Panasonic	AXK500145J	100-Pin Board-to-Board Connector
Vimcom	Adapter UFL/FME	Adapter Cable Hirose U.FL Male right to FME-Male, Length = 100mm

V6.61 refer to the current software version at the time of printing. Product name will change accordingly when new software versions are released. Software updates are available free of charge within the same main version.

Wireless CPU Q2687 EDGE AHEAD, WITH OPEN AT®

This pre-packaged solution has it all: huge processing power, Open AT®, the world's most powerful cellular embedded application environment, and WAVECOM Operating System 6.61 supporting Internet connections and Bluetooth. Compatible with all GSM networks across the world, the wireless CPU Q2687 is the most compact customizable quadband GSM/GPRS/EDGE solution available on the market. Powered by an ARM9 processor, it provides even more MIPS than any ARM7 based solutions along with Real Time Management capability and extended connectivity features (such as parallel interface).

With EDGE (Enhanced Data Rates for GSM Evolution) high speed data technology, the Q2687 solution has the perform-

ance, flexibility and adaptability you need for your next M2M, mobile computing or PDA application. Interchangeable with the wireless CPU Q2686, it offers the extended temperature range needed for hostile industrial environments and meets RoHS environmental standards.



PRODUCT FEATURES:

Wireless Processing Power:

- ARM 946E-S, 32-Bit, 104MHz
- Program Flash: Up to 1.5 MByte
- Up to 87MIPS

Operating-System Open AT® OS 6.61 with:

- RealTime OS (1ms interrupt Latency)
- VariSpeed (Control of Clock Frequency)
- VariPower (programmable Power Saving Modes)
- RTC with Calendar
- Lilon Battery Charger
- More than 350 AT Commands and 440 APIs
- Investment Protection with:
 - DOTA Type 1 (Open AT® Application)
 - DOTA Type 2 (WAVECOM OS)

Open AT® Plug-Ins:

- Internet Plug-In: TCP/IP/UDP/DNS/PING and Email (POP3/SMTP) & FTP
- Security Plug-In (available 2007)
- C-GPS
- Bluetooth

Physical:

- Overall Dimensions: 40 x 32.2 x 4 mm
- Weight: 9 g
- Temperature Range:
 - Operating Class A -20°C - +55°C
 - Operating Class B -40°C - +85°C
 - Storage -40°C - +85°C

GSM Features:

- Quad-Band (850/900/1800/1900 MHz)
- Quad Audio Codec (FR/HR/EFR/AMR)
- GSM CSD 14.4 Kbps
- GPRS Multislot Class 10, Class B
- EDGE Multislot Class 10, Class B, MCS 1-9
- Enhanced AEC & Noise Reduction

Interfaces:

- Antenna Connection:
 - U.FL Connector
 - RF Pads supporting soldered Coaxial Cable
- 100 Pin Board to Board Connector:
 - 1.8V/3V SIM (5V SIM with external Level Shifter)
 - Analog Audio: (2x Microphone, 2x Speaker)
 - Digital Audio (PCM)
 - USB 2.0 Slave
 - 2 x RS-232 serial Link up to 115.2 Kbps
 - Keypad, up to 5x5 Matrix
 - Up to 44 GPIOs
 - SPI and I²C-Bus
 - 2 x ADC (10-Bit, 0-2V)
 - DAC
 - Power Supply: 3.6VDC Nominal - 1.7A Peak

Approval & Quality:

- R&TTE Directive, GCF-CC, CE Marking, FCC, PTCRB, China RTE
- Manufacturing: ISOTS 16949
- Quality: ISO 9001
- RoHS compliant according Directive 2002/95/EC

Ordering Information:

Manufacturer	Product Name	Product Description
WAVECOM	Q2687H V6.61	Wireless CPU, GSM 850/900/1800/1900 and GPRS Cl. 10 and Internet Plug-In
GLYN	EVBO2687	GLYN Quik Evaluationboard for Q2687
WAVECOM	Q2687H STK	WAVECOM Quik Q2687 Starter Kit
Panasonic	AXK500145J	100 Pin Board-to-Board Connector
Vimcom	Adapter UFL/FME	Adapter Cable Hirose U.FL Male right to FME-Male, Length = 100mm

V6.61 refer to the current software version at the time of printing. Product name will change accordingly when new software versions are released. Software updates are available free of charge within the same main version.

Wireless Solutions for Everyone

Wireless CPU Q2501 MOVE INTO THE POLE POSITION

Optimize your application with a unique, easy-to-use and fully-integrated GSM/GPRS/GPS platform. The wireless CPU Q2501 combines state-of-the-art wireless voice and GPRS Class 10 data capabilities with a 16-channel GPS receiver in a single compact package. The Q2501 was designed to meet automotive requirements such as temperature, humidity and vibrations and can be easily integrated due to the small size of just 58x32x6 mm.

PRODUCT FEATURES:

Wireless Processing Power:

- ARM 7, 32-Bit, 52MHz max.
- Program Flash: Up to 1.5 MByte
- Up to 13MIPS

Operating-System Open AT® OS 6.57 with:

- VariPower (programmable Power Saving Modes)
- RTC with Calendar
- Lilon Battery Charger
- More than 350 AT Commands and APIs
- Investment Protection with:
 - DOTA Type 1 (Open AT® Application)
 - DOTA Type 2 (WAVECOM OS)

Open AT® Plug-Ins:

- TCP/IP Plug-In: TCP/IP/UDP/DNS/PING
- Internet Plug-In: Adds Email (POP3/SMTP) & FTP
- Security Plug-In (available 2007)
- Easy Data Logging/ Report Creation and Transfer

Physical:

- Overall dimensions: 58 x 32 x 6 mm
- Weight: < 15 g
- Temperature Range:
 - Operating Class A -20°C - +55°C
 - Operating Class B -35°C - +85°C
 - Storage -40°C - +85°C

Approval & Quality:

- R&TTE Directive, GCF-CC, CE Marking
- Manufacturing: ISOTS 16949
- Quality: ISO 9001
- RoHS compliant according Directive 2002/95/EC

GSM Features:

- Dual-Band (900/1800 MHz)
- Audio Codec (FR/HR/EFR)
- GSM CSD 14.4 Kbps
- GPRS Multislot Class 10, Class B
- Enhanced AEC & Noise Reduction

Together with the Open AT® Software Suite and the Open AT® Plug-Ins such as TCP/IP and Internet, the Q2501 is perfectly suited for telematics, alarms, security and fleet management applications



GPS Features:

- 16-Channel Receiver
- Accuracy: 3m CEP
- Start-up time:
 - Hot Start 3.5 sec
 - Warm Start 33 sec
 - Cold Start 41.5 sec
- Protocols:
 - NMEA-0183 Input/Output
 - UBX binary Input/Output

Interfaces:

- Antenna Connection:
- 2 serate MMS Connector
- 80 Pins Board to Board Connector, including:
 - 3V SIM (5V SIM with external Level Shifter)
 - Power Supply: 3.6VDC nominal - 1.9A Peak
- GSM
 - Audio: 2x Microphone, 2x Speaker
 - 2 X RS-232 serial Link up to 115.2 Kbps
 - Keypad, up to 5x5 Matrix
 - General Purpose I/O: 1 Input, 4 Output, 6 I/O
 - 1 X ADC, 1 x DAC

GPS

- 2 X RS-232 serial Link up to 115.2 Kbps
- Timepulse
- Dead Reckoning Interface (optional)

Ordering Information:

Manufacturer	Product Name	Product Description
WAVECOM	Q2501B V6.57	Wireless CPU, GSM 900/1800, GPRS Cl.10, GPS and TCP Plug-In
WAVECOM	Q2501B V6.57 IP	Wireless CPU, GSM 900/1800, GPRS Cl.10, GPS and Internet Plug-In
WAVECOM	Q2501 SK	WAVECOM Quik Starter Kit
GLYN	EVBUK-GPS	GLYN Quik Evaluationboard for Q2501B
Molex	52991-0808	80-Pin Board-to-Board Connector
Vimcom	ADAPTER MMS/FME 15	Adapter-Cable MMS-Male to FME Male, Length= 150mm
Vimcom	ADAPTER MMS/SMB 15	Adapter-Cable MMS-Male right to SMA Female, Length= 150mm
Vimcom	ADAPTER MMS/SMA 15	Adapter-Cable MMS-Male right to SMB Male, Length= 150mm

V6.57 refer to the current software version at the time of printing. Product name will change accordingly when new software versions are released. Software updates are available free of charge within the same main version.

Wireless CPU GS64 WIRELESS ACCESS IN SLIMLINE DESIGN

The WAVECOM highly compact and slimline wireless CPU GS64 contains all the GSM/GPRS functionality required for wireless capability. Quadband GSM/GPRS featuring an intrinsic TCP/IP Stack, enables the user to make effective use of GPRS on a global scale. Adaptable to many solutions, the GS64 is easy to integrate and flexible allowing optimum usage of the extended range of input/output capabilities.

Offering superior performance and reliability the GS64 is ideal for applications including PDA, laptops and POS terminals, as well as time critical or intensive monitoring applications and many other telemetry solutions. The wireless CPU GS64 is available also with an integrated SIM holder.

WAVECOM's Developer's Kit can be used with the GS64 to simplify application development.

The kit provides everything required to design and develop innovative applications and to bring them to market in rapid time.



PRODUCT FEATURES:

Physical:

- Overall Dimensions: 37 x 30 x 3.2 mm
- Weight: 5 g
- Temperature Range:
 - Operating Class A -20°C - +55°C
 - Storage -40°C - +85°C

GSM Features:

- Quad-Band (850/900/1800/1900 MHz)
- Quad Audio Codec (FR/HR/EFR/AMR)
- GSM CSD 14.4 Kbps
- GPRS Multislot Class 10, Class B
- Noise Suppression and Echo Cancellation
- Battery Charging Support

Internet Protocols:

- TCP/UDP/IP Protocol Stack
- Multi Sockets (up to 15)
- Non blocking Listening/Server Capability
- IPv4 Protocol
- Dynamic & static IP Address Allocation
- PPP Protocol (PAP)

Interfaces:

- Antenna Connection:
 - Miniature W.FL- Connector
 - RF Pads supporting soldered coaxial Cable
- 100 Pin Board to Board Connector:
 - 1.8V/3V SIM (5V SIM with external Level Shifter)
 - Analog Audio: (2x Microphone, 2x Speaker)
 - Digital Audio (PCM)
 - USB 2.0
 - 2 x RS-232 serial Link
 - Keypad, up to 5x4 Matrix
 - 9 dedicated and 15 programmable GPIOs
 - I²C-Bus
 - 4 x ADC
 - LED Driver
 - Power Supply: 3.6VDC nominal – 2 A Peak

Approval & Quality:

- R&TTE Directive, GCF-CC, CE Marking, FCC, PTCRB, China RTE
- Manufacturing: ISOTS 16949
- Quality: ISO 9001
- RoHS compliant according Directive 2002/95/EC

Ordering Information:

Manufacturer	Product Name	Product Description
WAVECOM	GS64 R2A	Wireless CPU, GSM 850/900/1800/1900, GPRS Cl. 10 and Internet
WAVECOM	GS64 R2A SIM	Wireless CPU, GSM 850/900/1800/1900, GPRS Cl. 10, Internet and SIM Holder
WAVECOM	GR/GS64 STK	WAVECOM Quik GS64 Starter Kit
Panasonic	AXK5F00547YG	100-Pin Board-to-Board Connector

R2A refer to the current software version at the time of printing. Product name will change accordingly when new software versions are released. Software updates are available free of charge within the same main version.

Wireless CPU Feature Comparison

Wireless CPU GR64

MAINTAIN EXISTING DESIGN AND ADD VALUE

Optimized for global M2M communications, the wireless CPU GR64 is a Quad Band GSM/GPRS Class 10 compact module. With functionality comparable to the WAVECOM GM47/GM48 and GR47/GR48 modules, the GR64 offers a broad range of voice and data features.

Its intrinsic TCP/IP Stack enables customers to make effective use of GPRS. The GR64 is configurable and possesses an extended range of input/output capabilities.

With its exceptionally powerful processor and enhanced memory, the GR64 is ideal for a broad spectrum of M2M applications including fleet and asset management, POS, vending, security, metering and other solutions.

WAVECOM's Developer's Kit can be used with the GR64 to simplify application development. The kit provides everything required to design and develop innovative applications and to bring them to market in rapid time.



PRODUCT FEATURES:

Wireless Processing Power:

- ARM 9, 32-Bit, 101MHz
- Program Flash: 2x 124 KByte

Physical:

- Overall Dimensions: 50 x 33 x 3.3 mm
- Weight: 9 g
- Temperature Range:
 - Operating Class A -20°C - +55°C
 - Operating Class A -30°C - +75°C
 - Storage -40°C - +85°C

GSM Features:

- Quad-Band (850/900/1800/1900 MHz)
- Quad Audio Codec (FR/HR/EFR/AMR)
- GSM CSD 14.4 Kbps
- GPRS Multislot Class 10, Class B
- Noise Suppression and Echo Cancellation
- Battery Charging Support

Internet Protocols:

- TCP/UDP/IP Protocol Stack
- Multi Sockets (up to 15)
- Non blocking Listening/Server Capability
- IPv4 Protocol
- Dynamic & static IP Address Allocation
- PPP Protocol (PAP)

Interfaces:

- Antenna Connection:
 - MMCX- Connector
 - RF Pads supporting soldered Coaxial Cable
- 60 Pin Board to Board Connector:
 - 1.8V/3V SIM (5V SIM with external Level Shifter)
 - Analog Audio: (2x Microphone, 2x Speaker)
 - Digital Audio (PCM)
 - USB 2.0
 - 2 x RS-232 Serial Link
 - Keypad, up to 4x4 Matrix
 - Up to 12 programmable GPIOs
 - I²C-Bus
 - 4 x ADC
 - LED Driver
 - Power Supply: 3.6VDC nominal – 2 A Peak

Approval & Quality:

- R&TTE Directive, GCF-CC, CE Marking, FCC, PTCRB, China RTE
- Manufacturing: ISOTS 16949
- Quality: ISO 9001
- RoHS compliant according Directive 2002/95/EC

Ordering Information:

Manufacturer	Product Name	Product Description
WAVECOM	GR64 R2A	Wireless CPU, GSM 850/900/1800/1900, GPRS Cl. 10 and Internet
WAVECOM	GR64 R2A SIM	Wireless CPU, GSM 850/900/1800/1900, GPRS Cl. 10, Internet and SIM Holder
WAVECOM	GR/GS64 STK	WAVECOM Quik GR64 Starter Kit
WAT	CFS06-60 ABA	60-Pin Board-to-Board Connector

R2A refer to the current software version at the time of printing. Product name will change accordingly when new software versions are released. Software updates are available free of charge within the same main version.

		Plug & Play			Quik Series								
		Fastrack M1306	Integra M2106	Q24 Classic	Q24 Plus	Q24 Extended	Q24 Auto	Q2501B	Q2438F	Q2686H	Q2687H	GR64	GS64
Processor	Type	ARM7		ARM7	ARM7	ARM7	ARM7	ARM7	ARM7	ARM9	ARM9	ARM9	
	Architecture	32 bit		32 bit	32 bit	32 bit	32 bit	32 bit	32 bit	32 bit	32 bit	32 bit	
	Top Speed	52MHz		52MHz	52MHz	52MHz	52MHz	52MHz	52MHz	104MHz	104MHz	101MHz	
	Vari Speed	No		No	No	No	No	No	No	26-104MHz	26-104MHz	32kHz	
	Sleep Mode	32kHz		32kHz	32kHz	32kHz	32kHz	32kHz	32kHz	32kHz	32kHz	32kHz	
	Cache Memory DMA (Direct Memory Acces)	•	•	•	•	•	•	•	•	•	•	•	•
Open AT® Application Execution	Open AT® Operating System	Open AT®	Open AT®	Open AT®	Open AT®	Open AT®	Open AT®	Open AT®		Open AT® Real Time	Open AT® Real Time	M2Mpower	
	MIPS (Worst / Best case)	9 to 13	9 to 13	1 to 6	9 to 13	9 to 13	9 to 13	9 to 13	5 to 7	12 to 16	12 to 16		
	Application Flash (Byte)	1.5M	1.5M	1.5M	1.5M	1.5M	1.5M	1.5M		1.5M	1.5M	2x124k	
	Application RAM (Byte)	128k	128k	128k	128k	128k	128k	128k		128k	128k	256k	124k
	Free Compiler (GNU)	•	•	•	•	•	•	•		•	•	•	
	Thumb Mode Compilation DOTA	Type I & II	Type I & II	Type I & II	Type I & II	Type I & II	Type I & II	Type I & II	Type I & II	Type I & II	Type I & II	Type I & II	Type I
Real Time Capabilities	HW timers (CPU clock res.)	•	•	•	•	•	•	•	•	•	•	•	•
	SW Timers	•	•	•	•	•	•	•	•	•	•	•	•
	External Interruption	<19ms	<19ms	<19ms	<19ms	<19ms	<19ms	<19ms	<19ms	<1ms	<1ms		
	RTC Interruption	•	•	•	•	•	•	•	•	<1ms	<1ms	wakeup	
	LowLevel Interrupt Routine	•	•	•	•	•	•	•	•	•	•	•	•
	HighLevel Interrupt Routine	•	•	•	•	•	•	•	•	•	•	•	•
IO	Pins	15+4	50	60	60	60	60	80		100	100	60	100
	RTOS Interrupt	•	•	•	•	•	•	•	•	•	•	•	•
	GPIO/GPO/GPI	•••••	•••••	•••••	•••••	•••••	•••••	•••••	•	31	up to 44	up to 44	up to 12
	Digital Audio	•	•	•	•	•	•	•	•	PCM	PCM (1)	PCM	PCM
	Analogue Audio	•	•	•	•	•	•	•	•	•	•	•	•
	ADC	•	•	•	•	•	•	•	•	•	•	•	•
	DAC	•	•	•	•	•	•	•	•	•	•	•	•
	SPI	•	•	•	•	•	•	•	•	•	•	•	•
	I2C	•	•	•	•	•	•	•	•	•	•	•	•
	RS232	•	•	•	•	•	•	•	•	•	•	•	•
	USB	•	•	•	•	•	•	•	•	2.0 (2)	2.0	2.0	2.0
	LED driver	•	•	•	•	•	•	•	•	•	•	•	•
	Buzzer driver or PWM	•	•	•	•	•	•	•	•	•	•	•	•
Keyboard	•	•	•	•	•	•	•	•	•	•	•	•	
SIM/RUIM	3V SIM	3V SIM	1.8V/3V SIM	1.8V/3V SIM	1.8V/3V SIM	1.8V/3V SIM	1.8V/3V SIM	3V SIM	3V RUIM	1.8V/3V SIM	1.8V/3V SIM	1.8V/3V SIM	
Expansion Port	•	•	•	•	•	•	•	•	•	not used	parallel	•	
Power Supply	Voltage/VDC (nom)	5.5 to 32	5	3.6	3.6	3.6	3.6	3.6	3.8	3.6	3.6	3.6	3.6
	Current/µA (min)	•	•	5	5	5	5	5	5	17	17	17	17
	Current/mA (idle)	17 @ 13.2V	9	3	3	3	3	3	4 (sleep)	1.7	1.7	1.6	1.6
	Current/A (max)	1.7 @ 5.5V	1.32	1.8	1.8	1.8	1.8	1.8	0.67	•	•	2	2
	Vari Power	9	9	9	9	9	9	9	9	9	9	9	9
RF Interface	Solder	•	•	•	•	•	•	•	•	•	•	•	•
	IMP	•	•	•	•	•	•	•	•	•	•	•	•
	U.FL(bottom side)	•	•	•	•	•	•	•	•	•	•	•	•
	U.FL(top side)	•	•	•	•	•	•	•	•	•	•	•	•
	MMS	•	•	•	•	•	•	•	•	•	•	•	•
Mechanical	Full shielding	•	•	•	•	•	•	•	•	•	•	•	•
	Size/mm	73x54x25	46x44x12	58x32x3.9	58x32x3.9	58x32x3.9	58x32x6.2	58x32x6		40x32.2x4	40x32.2x4	50x33x3.3	37x30x3.2
	Weight/g	82	81	<12	<12	<12	<12	<15	<12	<9	<9	9	5
Temperature	Class A	-20°C/+55°C	-20°C/+55°C	-20°C/+55°C	-20°C/+55°C	-20°C/+55°C	-20°C/+55°C	-20°C/+55°C	-20°C/+55°C	-20°C/+55°C	-20°C/+55°C	-20°C/+55°C	-20°C/+55°C
	Class B	-20°C/+55°C	-20°C/+55°C	-20°C/+55°C	-20°C/+55°C	-20°C/+55°C	-20°C/+55°C	-20°C/+55°C	-20°C/+55°C	-20°C/+55°C	-20°C/+55°C	-20°C/+55°C	-20°C/+55°C
Wireless	GSM	•	•	•	•	•	•	•	•	•	•	•	•
	GPRS class	10	10	10	10	10	10	10	10	10	10	10	10
	EDGE	•	•	•	•	•	•	•	•	•	•	•	•
	1xRTT	•	•	•	•	•	•	•	•	•	•	•	•
	AMPS	•	•	•	•	•	•	•	•	•	•	•	•
Radio	850MHz	•	•	•	•	•	•	•	800	•	•	•	•
	900MHz	•	•	•	•	•	•	•	•	•	•	•	•
	1800MHz	•	•	•	•	•	•	•	•	•	•	•	•
	1900MHz	•	•	•	•	•	•	•	•	•	•	•	•
	Maximum Sensitivity (dBm)	-108@900	-108@900	-110@900	-110@900	-110@900	-110@900	-108@900	-107@800	-110@900	-110@900	-110@900	-110@900
Audio	Codecs (3)	FR/EFR/HR	FR/EFR/HR	FR/EFR/AMR	FR/EFR/AMR	FR/EFR/AMR	FR/EFR/AMR	FR/EFR/HR	EVRC/13k	quad	quad	quad	quad
	Location Solution	•	•	external (4)	external (4)	external (4)	external (4)	GPS	gpsONE	Plug-In	Plug-In	external (4)	external (4)
Open AT® OS	TCP/IP	6.57	6.57	6.57	6.57	6.57	6.57	6.57	6.57	6.61	6.61	R2A	R2A
	Internet*	•	•	•	•	•	•	•	•	•	•	•	•
Open AT® Plug-Ins	GTI Mono	•	•	•	•	•	•	•	•	•	•	•	•
	GTI Colour	•	•	•	•	•	•	•	•	•	•	•	•
	IBM MQ-TT	•	•	•	•	•	•	•	•	on request	on request	•	•
	Open SIM access	•	•	•	•	•	•	•	•	•	•	•	•
	Bluetooth	•	•	•	•	•	•	•	•	•	•	•	•
	C-GPS	•	•	•	•	•	•	•	•	•	•	•	•
Open AT® IDE	Open AT®	•	•	•	•	•	•	•	•	•	•	•	•
	Open AT® GTI	•	•	•	•	•	•	•	•	•	•	•	•
	Open AT® built on Eclipse	•	•	•	•	•	•	•	•	•	•	•	•
	M2M Power	•	•	•	•	•	•	•	•	•	•	•	•
	Open AT® Applications	Free sources	Free sources	Free sources	Free sources	Free sources	Free sources	Free sources	Free sources	Free sources	Free sources	Free sources	Free sources

NOTES: (1) from Q2438v6 onwards, (2) requires external USB transceiver, (3) HR codec versions of Q24 classic and Q24 Plus available on request, (4) Any external autonomous GPS solution which supports NMEA may be controlled via Open AT®

Open AT® Software Suite SOFTWARE BUILD FOR EMBEDDED APPLICATIONS

WAVECOM's innovative Open AT® Software Suite is at the heart of millions of industrial cellular products worldwide. It has been purpose designed from day one to serve a broad

range of product designs covering automotive, M2M and mobile professional markets with the minimum processor and memory resource overhead.

The Open AT® Software Suite consists on the following:

■ Open AT® Firmware

Wireless protocol stacks and peripheral IO device drivers.

■ Open AT® Operating Systems

The Open AT® Operating System is the heart of the WAVECOM Family of wireless solutions. It is the brain that thinks, acts, does and makes WAVECOM products more than simple bit-pipe modems – they are highly sophisticated and powerful computing platforms.

■ The Real Time OS allows to embed time critical processes, ensures guaranteed response time to hardware timers and external interruptions through a low level interruption handler. It provides also the use of numerous APIs, DOTA and power consumption control.

■ With DOTA (Download Over The Air), you can protect your investment over years. It allows the remote upgrade of customer Open AT® applications, as well as the entire Open AT® Software via wireless cellular networks. This feature makes remote e-maintenance and new feature enhancements a reality. Software upgrades to application equipment can now be done while the equipment is in the field, without ever having to return it to a service center, thereby truly reducing the total cost of ownership.

■ Open AT® Applications is your real own code or available sample code, which is written in C and runs natively on top of a real time OS, with a minimum memory footprint and processor resource overhead. Application Notes and reference designs helps to develop innovative applications.

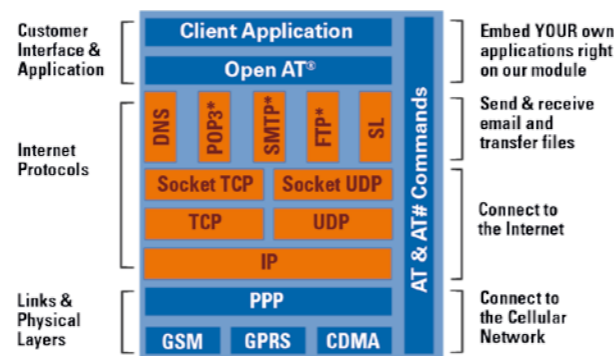
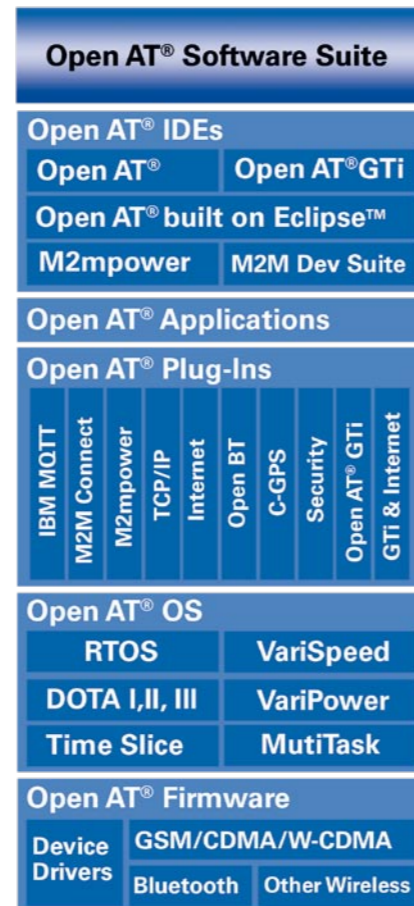
■ Open AT® Plug-Ins are ready to use applications to add on value added functionality. Several Open AT® Plug-Ins already exist today and new ones are being added all the time, bringing yet more architecture efficiency enhancements in addition to added value features. In the future, it will be possible to run multiple Open AT® Plug-Ins concurrently on the Wireless CPU.

- Internet Plug-Ins

Empower your machines and automotive systems with wireless connectivity. Those Plug-Ins allowing an efficient connection to existing infrastructure, transfer data, control & monitor applications and implement intelligent e-maintenance with with DOTA. Choose between two different Plug-In features. TCP/IP Plug-In enables basic Internet connectivity and the Internet Plug-In adds the ability to send/receive emails and upload/download any number and type of files from a remote server via FTP (File Transfer Protocol).

- Controllerless Bluetooth Plug-In

This Plug-In represents additional system efficiency from both a space and cost perspective. The Bluetooth stack and profiles are embedded within the Open AT® Software with which, with the addition of a reduced functionality controllerless (no microprocessor) chipset, a complete Bluetooth system can be realised. This Plug-In is today only available for the wireless CPUs Q2686 and Q2687.



- Controllerless GPS

This Plug-In is similar to the controllerless Bluetooth solution whereby the GPS stack is embedded as an Open AT® Plug-In, again allowing a reduced RF GPS chipset to be used to create an optimally efficient location solution. This Plug-In is today only available for the wireless CPUs Q2686 and Q2687.

- Security Plug-In

This Plug-In adds encryption, authentication and nonrepudiation to the air interface in addition to anti-tampering detection and avoidance. It will be available in 2007.

■ Open AT® IDE Develop your Application in Market recognised Environments

WAVECOM offers a unique family of application-targeted Integrated Development Environments providing developers with the ability to write embedded ANSI C applications, compile them, download them to the Wireless CPU and monitor them during the debugging phase of development. This high level, easy-to-use development tools enables you to run wireless applications right on any WAVECOM Wireless CPU, thereby eliminating extra components. By incorporating existing software building blocks and exchanging application software with other Open AT® users, you can further reduce the total cost of your solution.

The Open AT® IDE includes a toolset of: Project Wizard, Serial Link Manager, Target Monitor, Terminal Emulator, Software Generation Toolkit and Remote Task Environment

■ Open AT® built on Eclipse™

For easy start up in designing innovative embedded applications on any wireless CPU's, WAVECOM has selected Eclipse™ as the most adapted development environment to allow you to start a project, develop, debug, test, compile and download your application in the most seamless way.



Using Open AT built on Eclipse™, you get all the efficiency of Open AT®, together with the power, ease of use, and flexibility of Eclipse™. On both sides, you benefit from the extraordinary acceptance of a community ready to share its experiences and best practices.

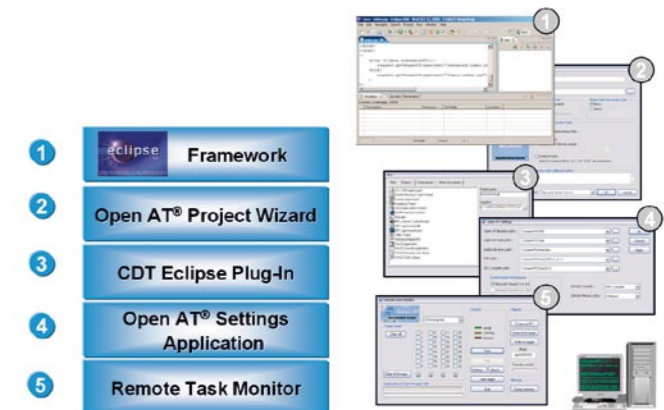
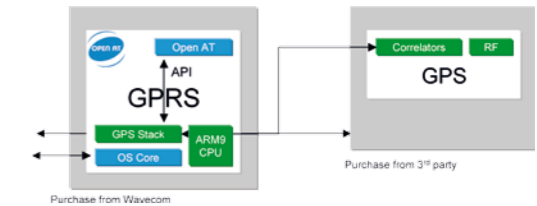
And it is very cost-effective, because you don't have to spend a cent to get started. **It is free of charge.**

■ Open AT® GTI

Open AT® GTI is an innovative development platform for creative companies wishing to differentiate their product in the shortest time, without investing in, and maintaining, their own development toolset. By using Open AT® GTI, you benefit from an environment that has evolved over more than 10 years and is referenced in some of the most quality-driven segments, such as automotive and M2M.

Based on eSIM technology and the WAVECOM wireless CPUs you can use Open AT® GTI for any graphical based application. Together with the associated Tools you can change applications, like changing or adding languages, or graphical elements, easily.

Open AT® GTI can be used in a broad spectrum of applications like: building and home security, automatic meter reading, automotive telematics and communication, point of sales, fixed wireless telephones and vending machines.



Development Tools and Accessories GLYN WAVECOM Evaluationboards

GLYN Evaluationboards provide a easy and cost-efficient way to become familiar with all functions and possibilities of the WAVECOM wireless CPUs.

Dedicated EVBs are available for the Q24 and Q2501 Series, featuring the appropriate wireless CPU and all necessary peripherals. This allows easy evaluation of the GSM/GPRS features

The EVBQ2686 is the latest addition to our line of EVBs,

designed to show the capabilities of the new Q26 Series. In addition to the standard peripherals, such as power supply, SIM holder and RS232 interface, this Evaluationboard also hosts a USB interface and a DISPLAYTECH 128x64 display. Together with the Open AT® software suite – included with all our EVBs – it is very easy to evaluate the complete possibilities of the WAVECOM wireless CPU.

Evaluationboard EVBQ2406

- GLYN Evaluationboard including:
 - WAVECOM Q2406B with Internet Plug-In
 - YAMAICHI SIM-Card Reader
 - RS-232 serial Interface: 9 Pin SUB-D
 - Audio Connectors: 2 x RJ 11
 - Antenna Connector: FME-Female
 - Test Pins for all Pins of the Module
- Serial Data Cable
- GSM-Magnetic-Mount-Antenna
- CD-ROM with technical Documentation
- Open AT® Software Suite

Evaluationboard EVBQ2501

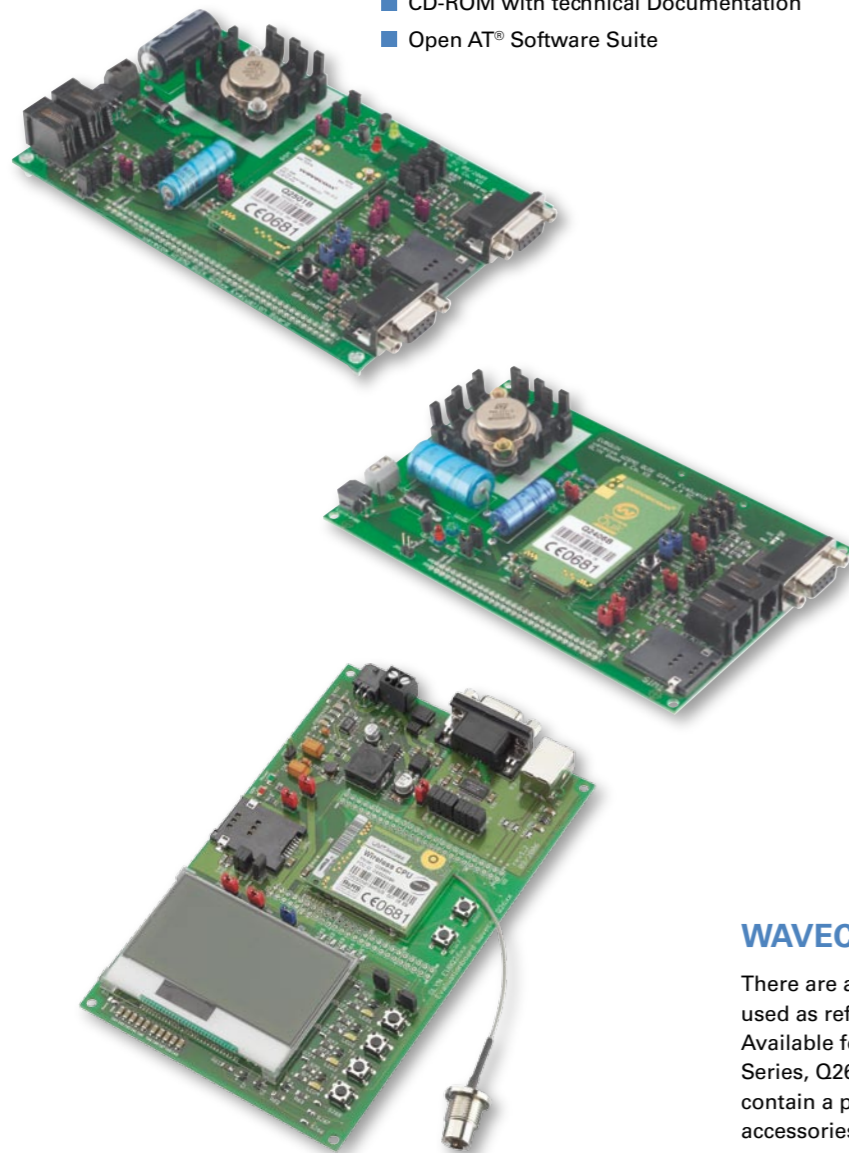
- GLYN Evaluationboard including:
 - WAVECOM Q2501B with Internet Plug-In
 - YAMAICHI SIM-Card Reader
 - 2x RS-232 serial Interface: 9 Pin SUB-D
 - Audio Connectors: 2 x RJ 11
 - Antenna Connector: 2x MMS, including Adapter Cables to FMEf and SMBm
 - Test Pins for all Pins of the Module
- 2x Serial Data Cable
- GSM-Magnetic-Mount and GPS Antenna
- CD-ROM with technical Documentation
- Open AT® Software Suite

Evaluationboard EVBQ26 Series

- GLYN Evaluationboard including:
 - WAVECOM Q2686H for EVBQ2686
 - WAVECOM Q2687H for EVBQ2687
 - YAMAICHI SIM-Card Reader
 - RS-232 serial Interface: 9 Pin SUB-D
 - USB Interface
 - DISPLAYTECH 128x64 Display
 - Antenna Connector:
 - Test Pins for all Pins of the Module
- Serial Data Cable
- GSM-Magnetic-Mount Antenna
- CD-ROM with technical Documentation
- Open AT® Software Suite

WAVECOM Starter Kits

There are also WAVECOM Starterkits available, which are used as reference environments for the wireless CPUs. Available for the Integra M2106B, the wireless CPU Q24 Series, Q26 Series and the GR/GS64 Series, the Starterkits contain a product-specific Evaluationboard and all needed accessories.



GLYN offers a wide range of high-quality GSM, GPS and combined GSM/GPS antennas from the well-known manufacturers Hirschmann, EAD and Vimcom.

Together with specific adapter cables to connect to the various WAVECOM modules and modems, these antennas ensure good signal quality.

Hirschmann

MCA189080

The MCA189080 is a GSM quadband roof-mount antenna. The design ensures a perfect fit and the styling of your product will not be altered.

MCA1890SLIM

The MCA1890SLIM is a GSM quadband patch antenna with 2500mm cable, for in-car installation.

MCA1890MP

The MCA1890MP is a GSM quadband round patch antenna (Ø 57 mm) with 2500mm cable, for in-car installation.

MCA1890MH

The MCA1890MH is a GSM quadband magnetic mount antenna with 2500mm cable. This antenna avoids permanent fixing and can be easily transferred.

MCA1890STAT

The MCA1890MH is a GSM dualband outdoor wall mount antenna with 5000mm cable.

EAD

DUALBAND SMA-MALE/ EAD TARGAN SMA-RIGHT

Both antennas are multipurpose flexible whip antennas. Fitted with an SMA-male connector, they can be screwed directly onto the SMA-connector of the WAVECOM Fastrack modem.

EAD GSM MINI

The Mini-GSM is a dualband internal groundplane dependent antenna (43x6mm), suitable for hand-held, portable or covert devices.

EAD GSM NERIS

The Neris is a triband internal groundplane independent antenna (81x21mm), for hand-held or access point applications.

EAD GSM S-QUAD

S-QUAD is a quadband internal groundplane independent antenna (110x20mm), for hand-held or access point applications.

GPS1890LP

The GPS1890LP is a low profile interior antenna for GSM and GPS. By the flat design of 100x66 mm and a height of 19 mm this antenna is especially suited for any applications with reduced space.

GPS1890PA

The GPS1890PA is an interior on glass GPS and GSM patch antenna with 3000 mm cable. The antenna makes it easy to fulfil all demands regarding fast, easy antenna installation.

GPS925

The GPS925 is a high efficient combined GSM and GPS roof mount antenna for car navigation, traffic guidance systems and fleet management.

EAD GSM WB-70 SMA

The WB70 is a dualband screw-mount antenna requiring a 16mm borehole. The cable exit is on the underside of the antenna and once mounted is totally enclosed and secure.

EAD GPSM WB-80 SMA

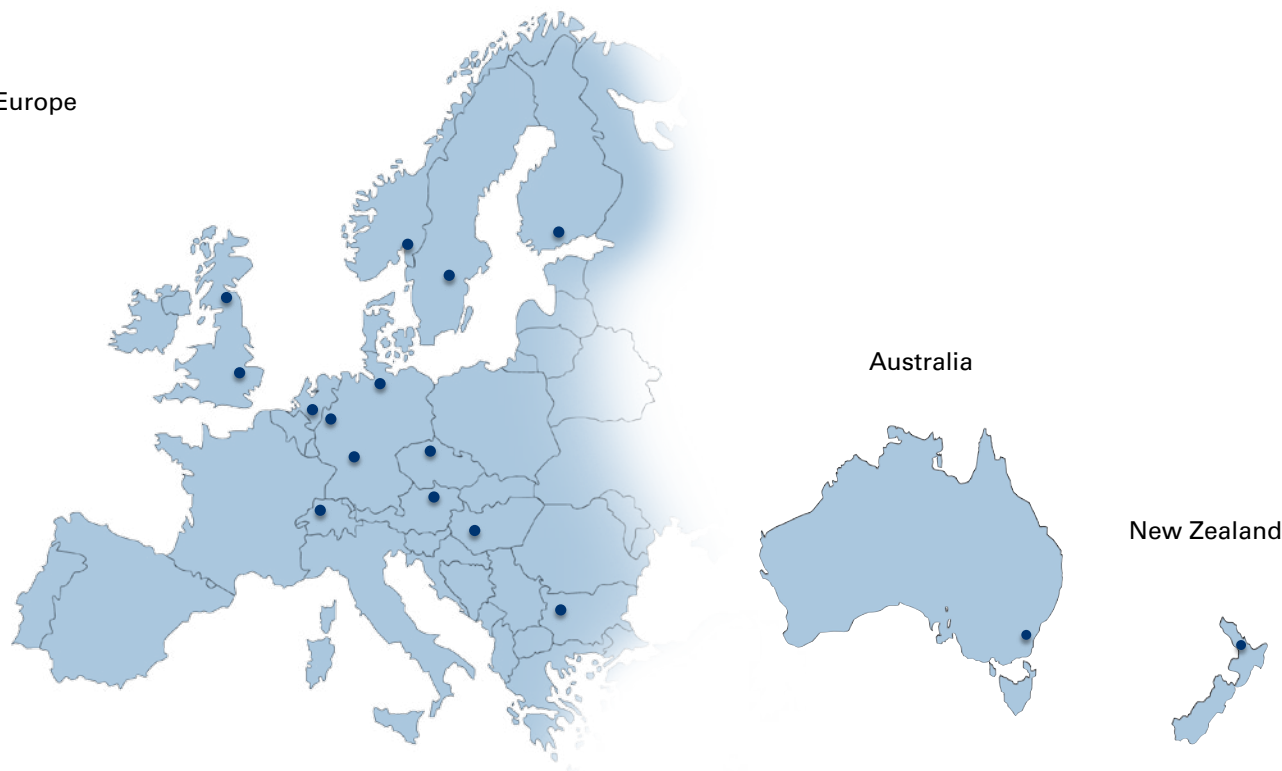
The WB80 is a dualband GSM and GPS screw-mount antenna requiring a 16mm borehole. The antenna is waterproofed and both the GSM and GPS cable exits on the underside of the antenna.

EAD GPS 4100 MMS

The GPS4100 (23x23mm) is an internal active GPS antenna designed to be integrated into mobile devices. It is a cost-effective way to design-in GPS functionality.

Other antennas types and specific antenna solutions are available on request.

Europe



Australia

New Zealand

GLYN GmbH & Co. KG
Head Office
Am Wörtzgarten 8
D-65510 Idstein
Tel. +49-(0)6126-590-222
Fax +49-(0)6126-590-111
Internet: www.glyn.de
e-mail: sales@glyn.de

GLYN GmbH & Co. KG
Office Nettetal
Ringstr. 88
D-41334 Nettetal
Tel. +49-(0)2157-124-222
Fax +49-(0)2157-124-211
Internet: www.glyn.de
e-mail: nettetal@glyn.de

GLYN GmbH & Co. KG
Office Nord
Langenharmer Weg 65h
D-22844 Norderstedt
Tel. +49-(0)40-943615-31
Fax +49-(0)40-943615-30
Internet: www.glyn.de
e-mail: nord@glyn.de

GLYN Austria
Campus 21 /
Businesspark Wien Süd
Liebermannstrasse A02/301
A-2345 Brunn am Gebirge
Tel. +43-(0)1 86670-214-00
Fax +43-(0)1 86670-214-05
Internet: www.glyn.at
e-mail: sales@glyn.at

GLYN Switzerland
Bachweg 3
CH-8133 Esslingen
Tel. +41-(0)44-944 5500
Fax +41-(0)44-944 5509
Internet: www.glyn.ch
e-mail: sales@glyn.ch

GLYN Benelux
Kerkhofstraat 21
NL-5554 HG Valkenswaard
Tel. +31-(0)40-2049700
Fax +31-(0)40-2049784
Internet: www.glyn.nl
e-mail: sales@glyn.nl

GLYN Czech Republic
Evropská 116/655
CZ-160 00 Praha 6
Mobile +420-731515566
Internet: www.glyn.cz
e-mail: sales@glyn.cz

GLYN Hungary
Bezerédj utca 8.
H-2233 Ecser
Tel. +36-(0)29-335-751
Fax +36-(0)29-335-751
Mobile +36-209-220-770
Internet: www.glyn.hu
e-mail: sales@glyn.hu

GLYN Finland
Tekniikantie 12
SF-02150 Espoo
Tel. +358-(0)9-2517-3585
Fax +358-(0)9-2517-3587
Mobile +358-40-772-6585
Internet: www.glyn.de
e-mail: finland@glyn.de

GLYN Sweden
Tammsväg 13
SE-815 76 Söderfors
Tel. +46-(0)293-30086
Fax +46-(0)293-30087
Mobile +46-70-3883535
Internet: www.glyn.se
e-mail: sales@glyn.se

GLYN Norway
Link Electronics AS
Postboks 135
Gramveien 76
N-1800 Askim
Tel. +47(0)-6988-9899
Fax +47(0)-6988-9799
Internet: www.linknordic.com
e-mail: info@linknordic.com

GLYN Bulgaria
Cooperations Partner
Universal 98 Ltd.
Kalina Malina Strasse 8
BG-1111 Sofia
Tel. +359-(0)2-8708009
Fax +359-(0)2-9714401
Internet: www.uni98-bg.com
e-mail: sales@uni98-bg.com

GLYN Ltd. U.K.
3 Woodbrook Crescent
Radford Way
GB-CM12 0EQ Billericay
Tel. +44-(0)1277-634200
Fax +44-(0)1277-631439
Internet: www.glyn.com
e-mail: sales@glyn.com

GLYN Ltd. U.K.
Northern Office
35 Wansdyke
Lancaster Park
GB-NE61 3RA Morpeth
Northumberland
Tel. +44-(0)1670-514616
Fax +44-(0)1670-516936
Internet: www.glyn.com
e-mail: sales@glyn.com

GLYN Ltd. Australia
Suite 7/201,
Lakeside Corporate Centre
29-31 Solent Circuit,
Norwest Business Park
Baulkham Hills
AUS-2154 Sydney
Tel. +61-(0)2-8850-0320
Fax +61-(0)2-8850-0370
Internet: www.glyn.com.au
e-mail: sales@glyn.com.au

GLYN Ltd. Neuseeland
Unit 5/18, Airborne Road
Albany, North Shore City 0632
Auckland, New Zealand
Tel. +64-(0)9-441-9050
Fax +64-(0)9-441-9060
Internet: www.glyn.co.nz
e-mail: sales@glyn.co.nz